

# S2W AI 사업 비전

대표이사 서상덕



“

인공지능은 모든 것의 엔진이다.  
(AI is the everything engine)

”

미래학자 에이미 웹 FTI CEO

## GPT Then

Generative Pre-trained Transformer



## GPT Now

General Purpose Technology



“

기기분야에서 캄브리아기 폭발이 일어날 것이다

미래학자 에이미 웹 FTI CEO

”



**싱글레리티** : 인공지능이 인간의 지능을 넘는 순간  
그 때의 인공지능은 모든 종류의 데이터와 기기가 연결된 지능

## Big DATA



## On-device

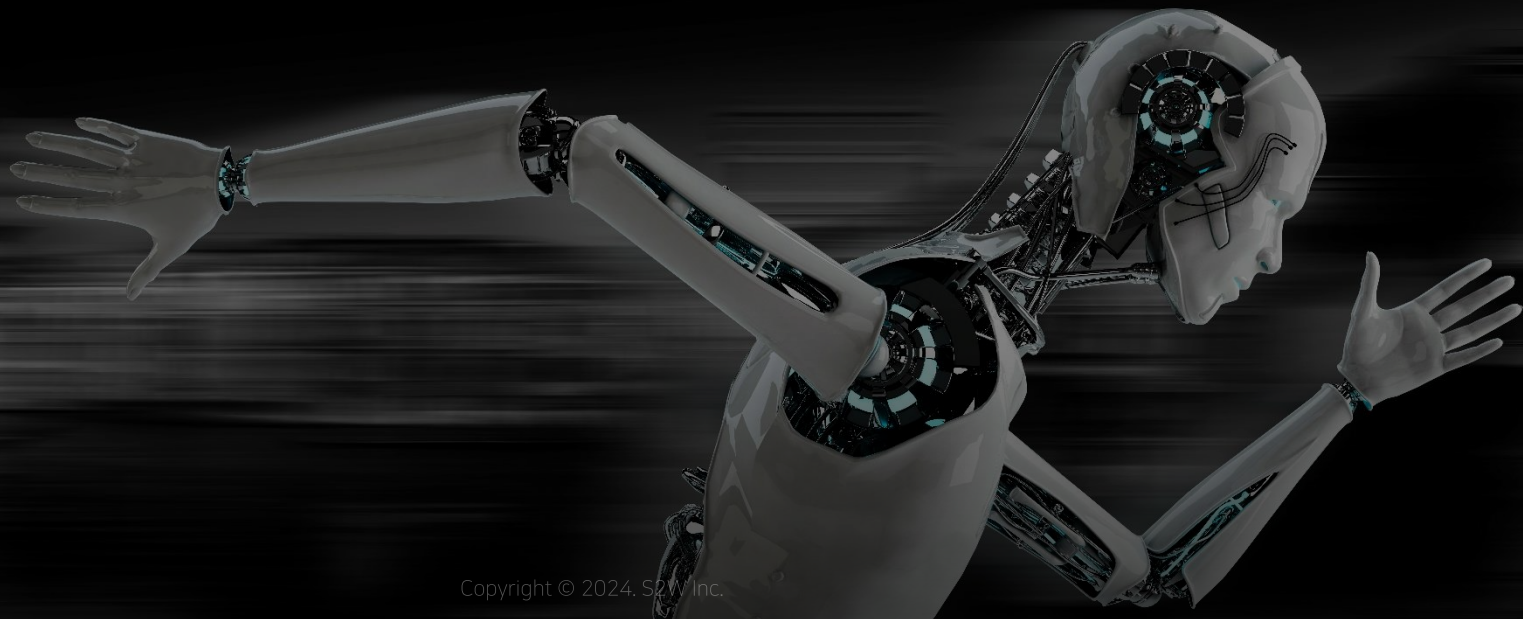


무어의 법칙  
2년마다 2배

인공지능 학습속도  
5개월간 3배

"5개월 사이에 ML 속도 3배 향상...  
AI 학습 성능 비약적 향상"

 AI타임스





Palantir



Palantir



nVIDIA®



Microsoft

# Palantir

## Palantir Technologies Inc. (PLTR)

NYSE - Nasdaq Real Time Price. Currency in USD

☆ Follow

**26.18** +2.37 (+9.96%)

As of 11:42AM EST. Market open.

Summary Chart Conversations Statistics Historical Data Profile Financials

Previous Close	23.81	Market Cap	58.128B
Open	25.75	Beta (5Y Monthly)	2.81
Bid	25.88 x 900	PE Ratio (TTM)	291.94
Ask	25.87 x 1000	EPS (TTM)	0.09
Day's Range	24.53 - 26.30	Earnings Date	May 06, 2024 - May 10, 2024
52 Week Range	7.19 - 26.30	Forward Dividend & Yield	N/A (N/A)
Volume	113,914,293	Ex-Dividend Date	N/A
Avg. Volume	68,072,886	1y Target Est	18.71



시가총액 75조 (58B USD)  
나스닥 시 대표기업

yahoo!  
finance

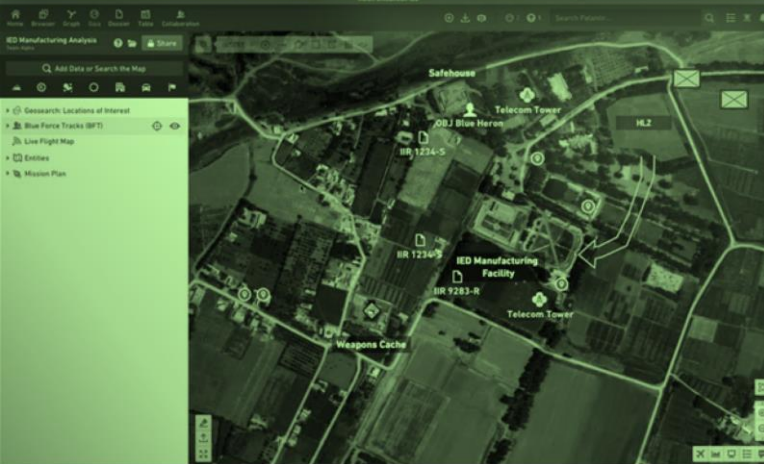
# Palantir



# CIA



# FBI





# Palantir

2003

빅데이터 분석전문 사이버 보안기업



2024

세계 최대 규모의 AI 솔루션 기업



바이오




제조



물류



금융



AI 산업 발전의 핵심

# 빅데이터 인공지능 기술

AI 사업 비전

대한민국을 넘어  
아시아의 팔란티어가 될 것



[Demo] S2W's darkweb ChatGPT, DarkCHAT (Associated with Xarvis)

1.5M views



The creators of the darkweb AI, DarkBERT, developed by S2W (Englis...

480K views

tom's **HARDWARE**

US Edition

Home > News

## Dark Web ChatGPT Unleashed: Meet **DarkBERT**

By Francisco Pires publ... Security News Bot @SecurityNewsBot · 1h  
...the dark web mining for cyber threat #HelpNetSecurity n/2023/05/19/cti... #HelpNetSecurity  
A language model for cyber science.



Follow

Security News Bot @SecurityNewsBot

Tweeting all things #InfoSec #Cybercrime #DDoS #Malware #Hackers #Vuln #Botnet and more.

9,194 Following 19.4K Followers

Followed by TALON



helpnetsecurity.com  
DarkBERT could help automate dark web mining for cyber threat int...  
Researchers have developed **DarkBERT**, a language model pretrained on dark web data, to help cybersecurity pros extract CTI.

entrepreneurshipfacts · 1h

entrepreneurshipfacts Researchers have developed a new AI model called DarkBERT, which is distinct from existing models like ChatGPT and Google Bard.

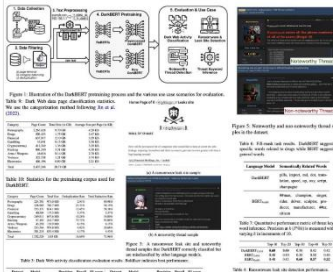
While those models were trained on data from the open web, DarkBERT was trained on dark web data.



@Moongie\_Phowngi · 11h  
Already done abusing ChatGPT. Now its time to abuse **DarkBERT**.

Andrew Lukyanenko @AndLukyane · May 18  
**DarkBERT**, new language model tackling the Dark Web's unique linguistic challenges. My review dives deep into its creation and potential. #AI #NLP #Cybersecurity

arxiv.org/abs/2305.08596  
andlukyane.com/blog/paper-review...



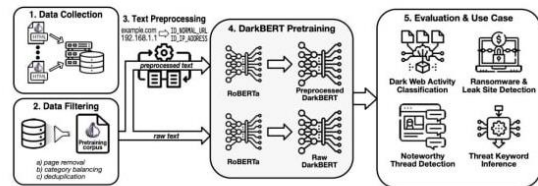
Helga Labus, Managing Editor Help Net Security

May 19, 2023

Share f t in

## DarkBERT could help automate dark web mining for cyber threat intelligence

Researchers have developed DarkBERT, a language model pretrained on dark web data, to help cybersecurity pros extract cyber threat intelligence (CTI) from the Internet's virtual underbelly.



DarkBERT pretraining process and evaluated use case scenarios (Source: KAIST/S2W)

## DarkBERT: A language model for the dark web

For quite a while now, researchers and cybersecurity experts have been leveraging natural language processing (NLP) to better understand and deal with the threat landscape. NLP tools have become an integral part of CTI research.

The dark web, known as a "playground" of individuals involved in illegal activities, poses distinct challenges when it comes to extracting and analyzing CTI at scale.

A team of researchers from Korea Advanced Institute of Science and Technology (KAIST) and data intelligence company S2W has decided to test whether a custom-trained language model could be useful, so they came up with DarkBERT, which is pretrained on dark web data (i.e., the specific language used in that domain).

## Potential use case scenarios

DarkBERT has undergone extensive pretraining on texts in English – approximately 6.1 million pages found on the dark web. (The researchers filtered out meaningless and irrelevant pages.)

다보스포럼 (WEF) 선정 **세계 100대 혁신기술 스타트업**

Microsoft 선정 **AI 유망 스타트업**

**국가정보원 사이버안보 협력센터** 참여기업

INTERPOL 공식 협력 기업

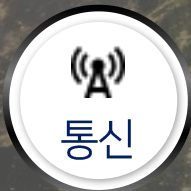
세계 최초 **다크웹 AI 언어모델 DarkBERT**, 국제 인공지능 학회 ACL 등재





# No1. 다크웹 인텔리전스 기업

# No1. 사이버 위협 인텔리전스 기업



기업 고객 + 50

# 최상위 AI & 빅데이터 분석 인력 보유

94명

R&D 개발자 55%+

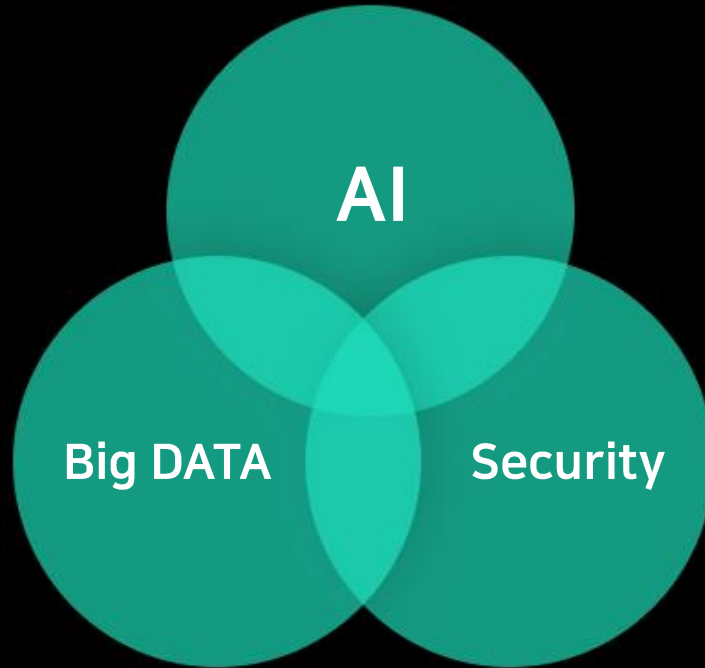
석사 이상 47%+

박사 연구원 10명



# S2W

## 인공지능 데이터 인텔리전스 기업



**3 CORE 의 Convergence로 AI Platform (S-AIP) 출시**



A night-time photograph of the Space Shuttle Discovery being mated to the External Tank and Solid Rocket Boosters on the Vehicle Assembly Building. The orbiter is suspended from a crane and is being lowered into position. The orbiter has the NASA logo and the name "Discovery" on its side. The orbiter is white with a black nose cone and a black tail fin. The External Tank is orange and the Solid Rocket Boosters are white. The Vehicle Assembly Building is a large, complex structure with many levels and a central chimney. The scene is illuminated by artificial lights, creating a dramatic contrast against the dark night sky.

막대한 물적 자원이 필요

A space shuttle is shown ascending from the Earth's surface, with a bright orange nose cone and white boosters. The background is a dark blue night sky filled with stars, and the Earth's horizon is visible at the bottom. The text is overlaid in white on the central part of the image.

글로벌 경쟁을 위한 자원 확보  
2025년 기업공개 (IPO) 추진

# S2W VISION 인공지능 데이터 인텔리전스 기업



**감사합니다**